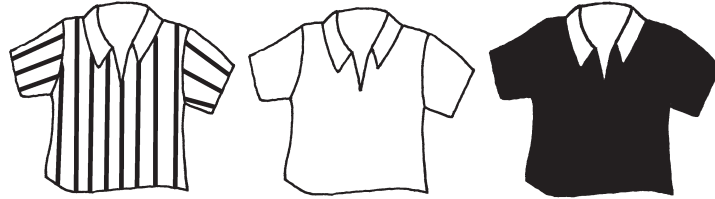





ACTIVITY 4

Directions: Fill in the chart using Y for yes or N for no as you solve the puzzle.

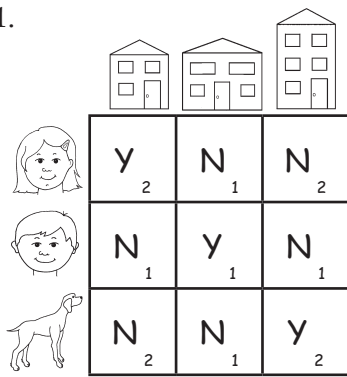


A father, his daughter, and his son will each wear a different shirt today. Use the clues and the chart to find each one's shirt.

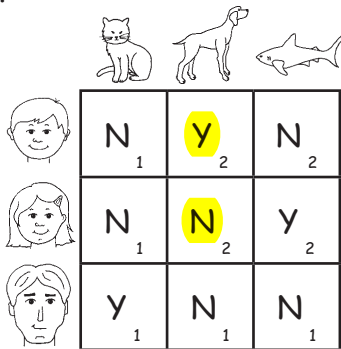
1. The father will not wear stripes.
2. The daughter will not wear anything black or striped.

1.



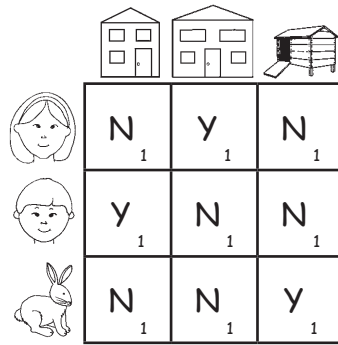
Clue 1 states that the boy lives in the widest house, which is the house in the middle. Clue 2 states that the dog's house is not the smallest. So the dog lives in the biggest house and the girl lives in the smallest house.

2.



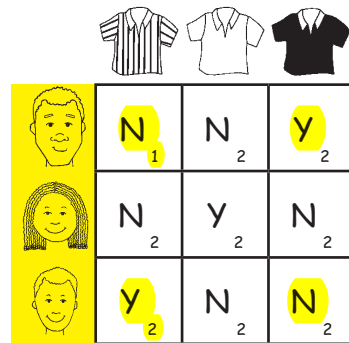
Clue 1 states that the dad's pet was crying in a tree. Only the cat could climb a tree, so the dad's pet is the cat. Clue 2 states that the boy's pet sleeps in his bed. A shark cannot sleep in a bed, so the boy's pet is the dog. That means that the girl's pet is the shark.

3.



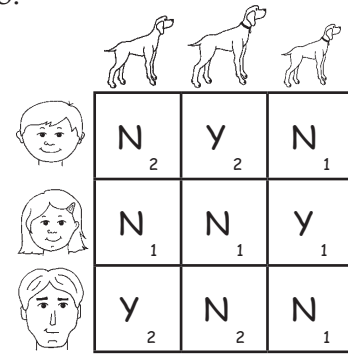
Clue 1 states that the one with the longest hair lives in the biggest house. The little girl has the longest hair. So, she lives in the house in the middle, which is the biggest. Since one of the houses is a rabbit hutch, the rabbit must live in that. Then the boy lives in the other house.

4.



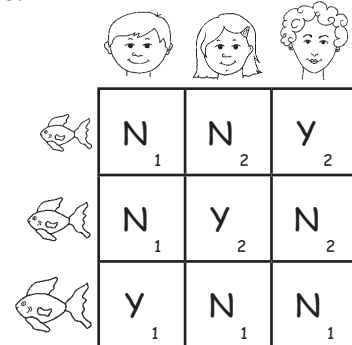
Clue 1 states that the father will not wear stripes, so the father will wear either the black shirt or the white shirt. Clue 2 states that the daughter will not wear anything black or striped. That leaves the white shirt, so the daughter will wear the white shirt. Then the father will wear the black shirt and the son will wear the striped shirt.

5.




Based on Clue 1, the girl's dog is the smallest dog on the right since the other dog with a collar is big. Clue 2 states that the dad's dog is not the biggest or smallest, so it is the middle-sized dog on the left. That means the boy's dog is the biggest dog.




6.



Based on Clue 1, the boy has the biggest fish. Clue 2 says that the tallest owner has the smallest fish. Since the mother is the tallest, she has the smallest fish. So the girl has the middle-sized fish.


7.






	N ₂	Y ₂	N ₂
	Y ₂	N ₂	N ₂
	N ₁	N ₂	Y ₂

Based on Clue 1, the mother has one of the two bowls of noodles since the ice cream is the smallest. Clue 2 states that the girl has the hottest food, so she has the bowl in the middle with the steam. Then the mother has the bowl on the right, and the boy has the ice cream.


8.






	N ₂	Y ₂	N ₂
	N ₂	N ₂	Y ₂
	Y ₂	N ₁	N ₂

Based on Clue 1, the dog's bowl will fit in the girl's bowl, which means it's either the medium or small bowl, not the large bowl. Clue 2 says that the boy's bowl is smaller than the dog's, so the boy's bowl is the small one, and the dog's is the medium bowl, leaving the large bowl as the girl's.

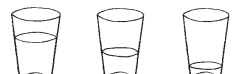
9.






	Y _{3,2}	N ₁	N _{3,2}
	N _{3,2}	N ₁	Y _{3,2}
	N ₁	Y ₁	N ₁

Clue 1 tells you that the grandmother's plane is not the smallest or largest, so grandmother's plane is the middle-sized plane in the middle column. Then the boy and the girl have the largest and smallest planes. Clue 2 states that the boy is older than the girl. Use this information with Clue 3 to conclude that since the girl is the youngest, her plane is the largest, and the boy's plane is the smallest.


10.






	N ₁	N ₂	Y ₂
	Y ₁	N ₁	N ₁
	N ₁	Y ₂	N ₂

Based on Clue 1, the mom's and the girl's glasses are less full, so neither has the fullest glass, which must be the boy's. Clue 2 says that mom's and the boy's glasses both are fuller, so the mom's has to be the medium glass. That leaves the least full glass as the girl's.


11.






	N ₁	Y ₂	N ₂
	N ₁	N ₂	Y ₂
	Y ₁	N ₁	N ₁

Clue 1 states that the cat's house has the fewest windows, so it's the three-window house. Clue 2 says that the girl's house has one more window than the cat's, so it's the four-window house. That leaves the five-window house as the boy's.

12.



	N ₁	N ₂	Y ₂
	N ₁	Y ₂	N ₂
	Y ₁	N ₁	N ₁

Clue 1 says that the cat was the youngest, whether last year or any year. So the cat is three years old and has the cake with three candles on it. The boy and the girl are both older than the cat. Clue 2 states that the boy is not the oldest, so he is not five. Since the cat is three, the boy must be four. The girl is the oldest at five.